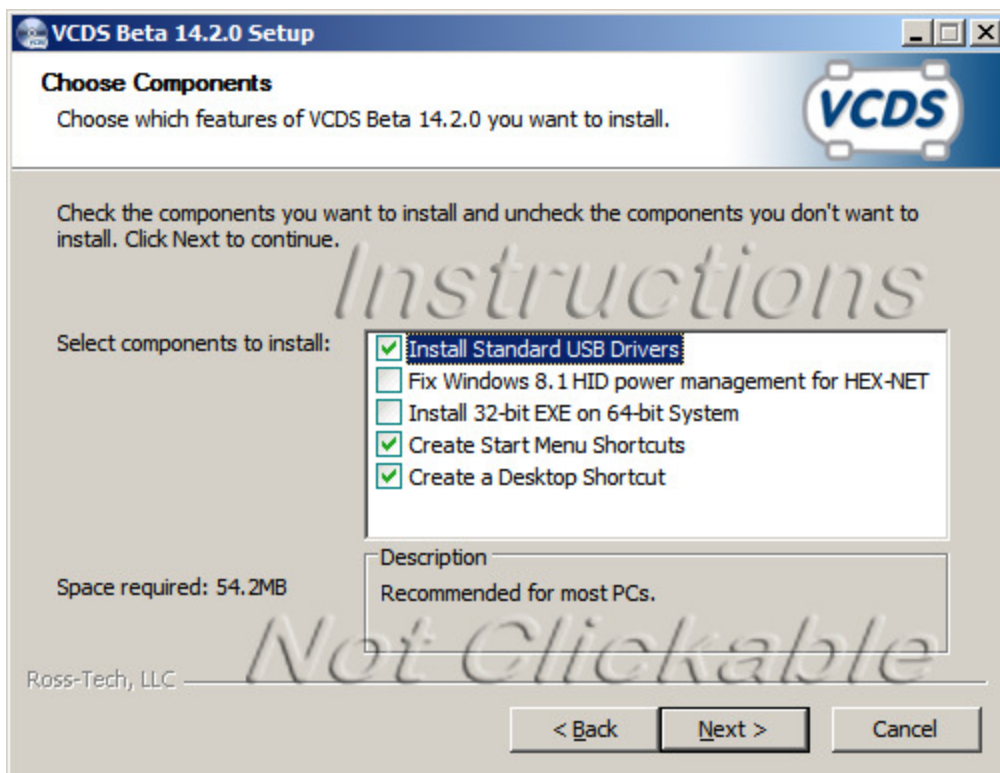




## Installation Instructions for VCDS® version 14.x



**The vast majority of users who are installing VCDS do not need to change anything on this screen and can simply click the “Next” button.** However, to avoid countless phone calls and e-mails asking what these options do, we present this guide.

**Install Standard USB Drivers:** is recommended for most PCs and is selected by default.

**Fix Window 8.1 HID power management** is only available if the installer is run on Windows 8.1, where it is selected by default. It is required for the HEX-NET interface to communicate reliably via USB on systems running Windows 8.1.

**Install 32-bit EXE on 64-bit Systems** can only be selected if your PC is running a 64-bit Windows. The vast majority of users with 64-bit Windows do not need this option and should use the 64-bit EXE files which are installed by default on those systems. However our 64-bit EXE may not work properly on a small percentage of 64-bit systems, and this option give those users an immediate work-around.

**Create Start Menu Shortcuts** is selected by default and will put the usual entries in your Start Menu. However, if you don't want to clutter up your Start Menu, you can de-select this. Version 14 includes a new Start Menu entry for the HEX-NET WiFi Configurator.

**Create a Desktop Shortcut** is selected by default and will put the usual shortcut on your desktop. However, if you don't want to clutter up your Desktop, you can de-select this.

This document is Copyright © 2014 by Ross-Tech, LLC, all rights reserved.  
Unauthorized reproduction and re-distribution is explicitly prohibited.